

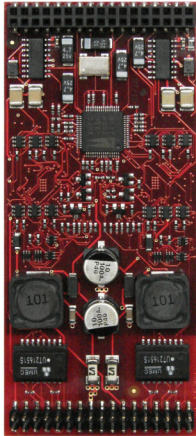
### **BF2S02FXS: 4 Port Hybrid Module**

The BF2S02FXS is used for small enterprises who needs **up to 4 concurrent ISDN BRI calls**.

Our Hybrid Module combines BRI and Analog Ports on one Module to reduce overall costs. It can be used to connect a Softpbx to the PSTN Network as well as a traditional PSTN based PBX.

Analog Phones, Faxes and Modems can be connected directly to the Analog FXS Ports.

It is fully compatible and combinable with all berofix Modules, Cards and Boxes.



#### **Technical Details:**

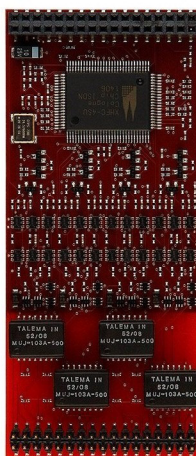
- 2 BRI (S0) ISDN Ports
- 2 analog FXS Ports
- Each BRI Port configurable as NT or TE with PIN interchanging
- Termination Resistors (100 ohm) per line
- TE/NT mode and Termination is selectable via software (Jumperfree)
- Layer 2 is Q.921 and Layer 3 is Q.931 (EuroISDN DSS1) compatible
- DSS1 Feature set: CLIP/No-Screening, CLIR, COLP, UUS, MCID, CD, CNIP
- Q.SIG feature set: CNIP
- FXS supports 0V to -94.5V, 3-5 REN (depending on line length)
- FXS has current feed 20-41mA
- FXS Ringing Frequency, Amplitude, Waveshape and Cadences programmable (by Country Setting)
- Dimension: 105 x 46 x 9 mm, Weight: < 40g
- Operating Temperature: 0-70°C
- CE and TBR-3 compliance (ISDN BRI)

### **BF4S0: 4 Port BRI Module**

The BF4S0 is used for small to medium enterprises who needs **up to 8 concurrent ISDN BRI calls**.

It can be used to connect a Softpbx to the PSTN Network as well as a traditional PSTN based PBX.

It is fully compatible and combinable with all berofix Modules, Cards and Boxes.

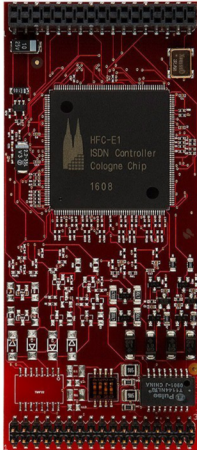


#### **Technical Details:**

- 4 BRI (S0) ISDN Ports
- Each Port configurable as NT or TE with PIN interchanging
- Termination Resistors (100 ohm) per line
- TE/NT mode and Termination is selectable via software (Jumperfree)
- Layer 2 is Q.921 and Layer 3 is Q.931 (EuroISDN DSS1) compatible
- DSS1 Feature set: CLIP/No-Screening, CLIR, COLP, UUS, MCID, CD, CNIP
- Q.SIG feature set: CNIP
- Dimension: 105 x 46 x 9 mm
- Weight: < 40g
- Operating Temperature: 0-70°C
- CE and TBR-3 compliance (ISDN BRI)

### **BF1E1: 1 Port PRI Module**

The BF1E1 is used for medium enterprises who need up to **30 concurrent calls**. It can be used to connect a Softpbx to the PSTN Network as well as a traditional PSTN based PBX. It is fully compatible and combinable with all berofix Modules, Cards and Boxes.



#### **Technical Details:**

- 1 PRI (S2M) Port
- configurable as NT or TE
- Termination Resistors 120 ohm switchable via DIPs
- Layer 2 is Q.921 and Layer 3 is Q.931 (EuroISDN DSS1) compatible
- DSS1 Feature set: CLIP/No-Screening, CLIR, COLP, UUS, MCID, CD, CNIP
- Q.SIG feature set: CNIP
- Dimension: 105 x 46 x 9 mm
- Weight: < 40g
- Operating Temperature: 0-70°C
- CE and TBR-4 compliance (ISDN PRI)

### **BF2E1: 2 Port PRI Module**

The BF2E1 is used for medium enterprises who need up to **60 concurrent calls**. It can be used to connect a Softpbx to the PSTN Network as well as a traditional PSTN based PBX. It is fully compatible and combinable with all berofix Modules, Cards and Boxes.

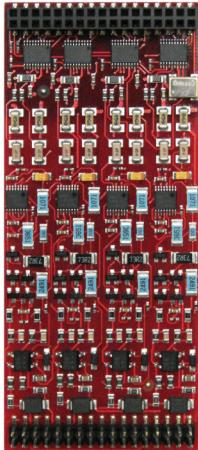


#### **Technical Details:**

- 2 PRI (S2M) Port
- Each Port configurable as NT or TE
- Termination Resistors 120 ohm switchable via DIPs
- Layer 2 is Q.921 and Layer 3 is Q.931 (EuroISDN DSS1) compatible
- DSS1 Feature set: CLIP/No-Screening, CLIR, COLP, UUS, MCID, CD, CNIP
- Q.SIG feature set: CNIP
- Dimension: 105 x 46 x 9 mm
- Weight: < 40g
- Operating Temperature: 0-70°C
- CE and TBR-4 compliance (ISDN PRI)

### **BF4FXO: 4 Port Analog FXO Module**

The BF4FXO is used for medium enterprises who need up to 4 **concurrent Analog FXO calls**. It can be used to connect a Softpbx to the PSTN Network as well as a traditional PSTN based PBX. It is fully compatible and combinable with all berofix Modules, Cards and Boxes.

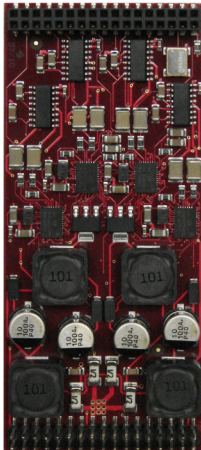


#### **Technical Details:**

- 4 Port FXO Analog Ports
- FXO Loop Start, FXO Kewl Start
- Dimension: 105 x 46 x 9 mm
- Weight: < 40g
- Operating Temperature: 0-70°C
- CE compliance

### **BF4FXS: 4 Port Analog FXS Module**

The BF4FXS Module is used for small an medium enterprises who need internal Analog FXS Ports to connect Analog Phones, Faxes and Modems. Our 4 Port FXS Module is fully compatible and combinable with all berofix Modules, Cards and Boxes.



#### **Technical Details:**

- 4 separate Analog FXS Ports
- FXS supports 0V to -94.5V
- FXS supports 3-5 REN (depending on line length)
- FXS has Current feed 20-41mA
- FXS Ringing Frequency, Amplitude, Waveshape and Cadences programmable (by Country Setting)
- Dimension: 105 x 46 x 9 mm
- Weight: < 40g
- Operating Temperature: 0-70°C
- CE compliance

### **BF2GSM: 2 Port GSM Module – *COMING SOON***

The BF2GSM is used for small enterprises who need up to **2 concurrent GSM calls**.

It can be used for mobile convergence, LCR and SMS.

Our GSM Module is fully compatible and combinable with all berofix Modules and Cards.



#### **Technical Details:**

- 2 separate GSM Ports
- QuadBand(850/900/1800/1900 Mhz)
- GSM/GRPS Protocol Stack 3GPP Release 4 compliant
- SMS (Text and PDU)
- Integrated SMS-Mail and Mail-SMS Gateway
- GSM Supplementary Services (CLIP, CLIR)
- Dimension: 105 x 46 x 9 mm
- Weight: < 40g
- Operating Temperature: 0-70°C
- CE compliance